

Electronic devices – designed to be wasted?

How to keep them in the cycle

Yanik Moldt

Project Manager, Work Package Leader WEEE

Dr. Heiko Arnold

Chief Operations Officer, Aurubis

Laura Robert

Environmental Manager, Aurubis

Ute Müller

Managing Director, Consist ITU



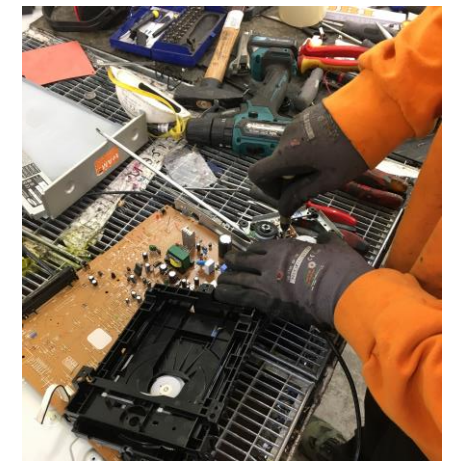
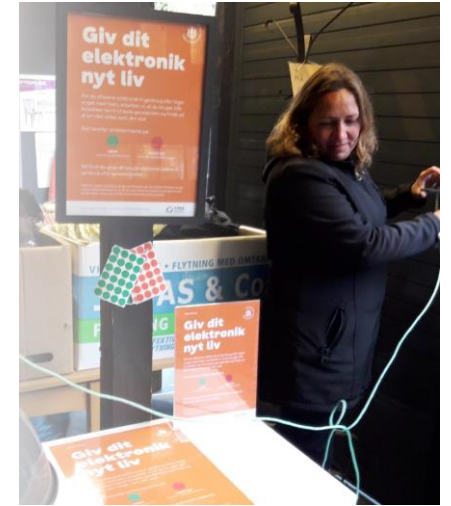
Repair & Reuse

Copenhagen – LHA + smaller EEE

- 70 % of collected LHA are resold
- About 16-25 tonnes/a of smaller EEE are reused

Hamburg

- Establishing additional second-hand shop
- High demand for second-hand EEE
- Legislation can be hindering repair



Repair & Reuse

Genoa – Repair cafés

- 7 Repair cafés with almost 400 treated items
- Support for Repair Cafés needed
- High interest among citizens and students

Lisbon

- 30 Repair Cafés organised
- A model for remote Repair cafés was developed



WEEE collection

New WEEE depot container

- Easier access and handling in the event of a fire
- Decentralized collection points for higher collection rates
- Test of WEEE-bins in Copenhagen

Awareness raising on correct separation

- Public event with workshops and education
- Survey in Copenhagen among citizens
- Repairers request for more circular EEE



Multi-metal recycling from WEEE

Recycling is one of the best ways to positively impact the world we live in

Aurubis refines and recycles multiple metals, using various raw materials

FORCE is of strategic relevance to Aurubis to support the use of secondary raw material



Analysis of the ecological and commercial parameters for the recycling of small household electrical and electronic devices

- » Advanced knowledge for individual types of WEEE regarding composition, distribution of valuable metals, recycling capability
- » Manual dismantling results in a better eco footprint but is not beneficial from an economic perspective due to the cost

Regulatory action points to maximize the potential in Europe

- » Recyclable product design, improving technology for automated sorting and separation, increasing recycling content through initiatives

Decision support tool(s)

www.CYCEL.de (open access)

- DST for citizens and other stakeholders about the market value of used devices, repair and recycle.

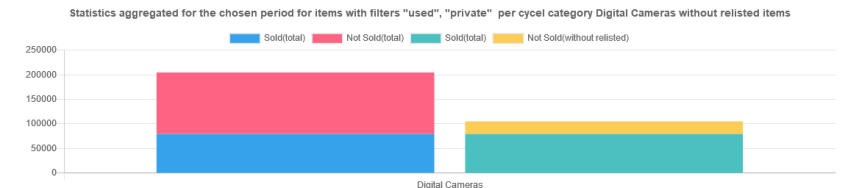
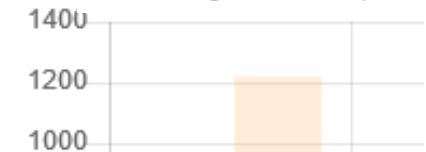
CYCEL/Statistics (restricted access)

- Statistics about sales data from eBay.de
- For thousands of kinds of devices
- From Dec 2018 up to now
- Also photos and data from the dismantling
- Please ask on Cysel for credentials.

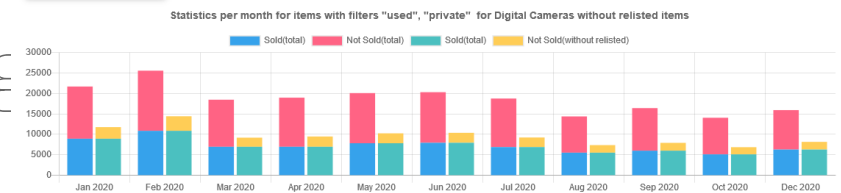


Sold & not sold devices

On average, a sales price of 61.69 €



EXPORT TO EXCEL



EXPORT TO EXCEL

Thank You

Yanik Moldt

Project manager, Work package leader WEEE

Laura Robert

Environmental Manager Aurubis AG

Ute Müller

Managing Director Consist ITU

